



**FETHİYE KEMAL MUMCU  
ANADOLU LİSESİ**



**SOĞUKSU NATIONAL  
ANKARA PARK**



Kazım Hüseyin

www.TURKEY.com



# National Parks and People



## 5<sup>th</sup> Meeting in Sopot-BULGARIA

9-13 October 2012







8000 visitors can benefit from the facilities that include tables, barbecues, drinking fountains, toilets and shelters from rain. There is also an administration office, a museum and open-air theater.







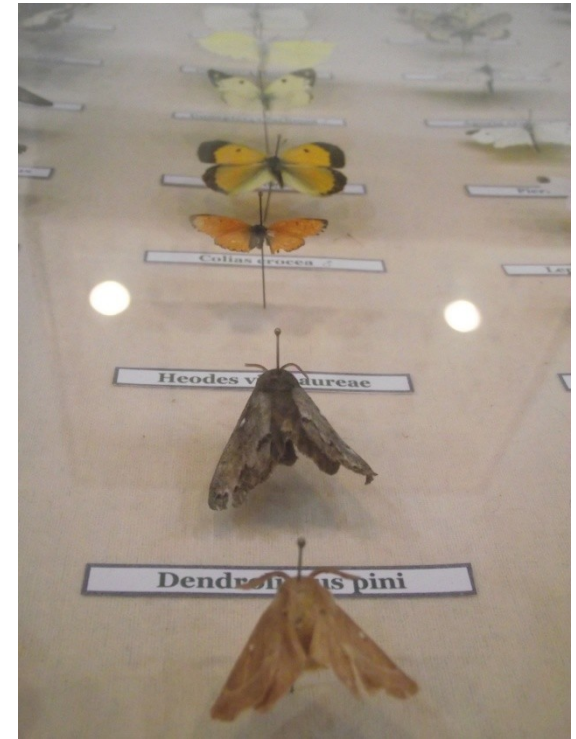
People visit  
Soğuksu National  
Park to take  
advantage of the  
activities both in  
summer and in  
winter.







There is a little museum in Soğuksu National Park. People can see some stuffed animals, some samples of dried plants, insect collection and natural habitats of some animals are exhibited.







Soğuksu National Park is in volcanic area. For this reason, there is plenty of hot and cold water supplies in there and they are also used for spa tourism.







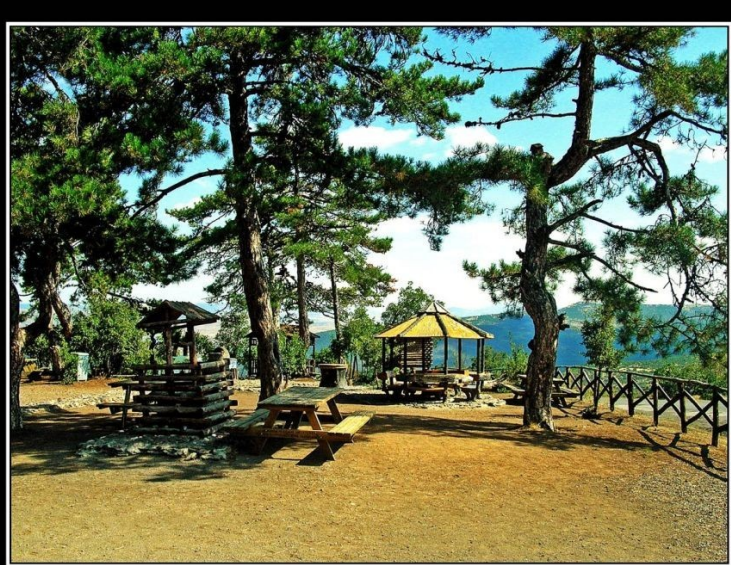
Both adults and  
children have  
plesure time and  
leave their daily  
stress in the park  
areas of Soğuksu  
National Park.







When people visit the park, they do picnic with the panoramic view.



07/06/2009





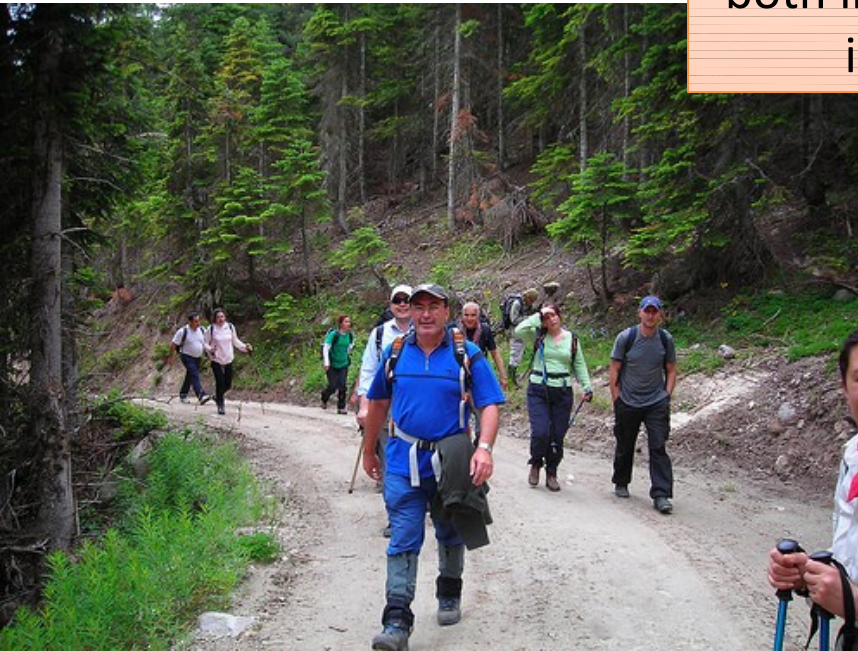
People who want  
to be together  
with nature, have  
the chance of  
doing camping in  
suitable areas.







Some people do  
tracking for living a  
healthy life and to  
explore the nature  
both in summer and  
in winter.







People enjoy the peace by fighting free environment-friendly paint when they play paintball.







Park activities are not limited with these. People take advantage of the park as they wish.

For example, playing traditional games, jumping rope, playing some funny games etc....



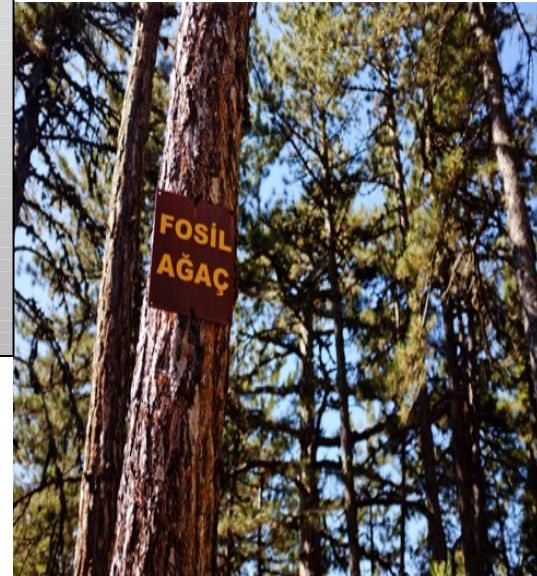




Akif Aykurt



People who come to the park don't turn back home without observing flying birds in bird watching house and examining the fosilled trees.







**FETHİYE KEMAL MUMCU  
ANADOLU LİSESİ**



**THANKS FOR LISTENING**

**SOĞUKSU NATIONAL  
PARK TURKEY**