

National Parks and People



Education and Culture
Lifelong learning programme
COMENIUS
National Parks of Europe 2011-2013



A man controlled the nature before he learned how to control himself.



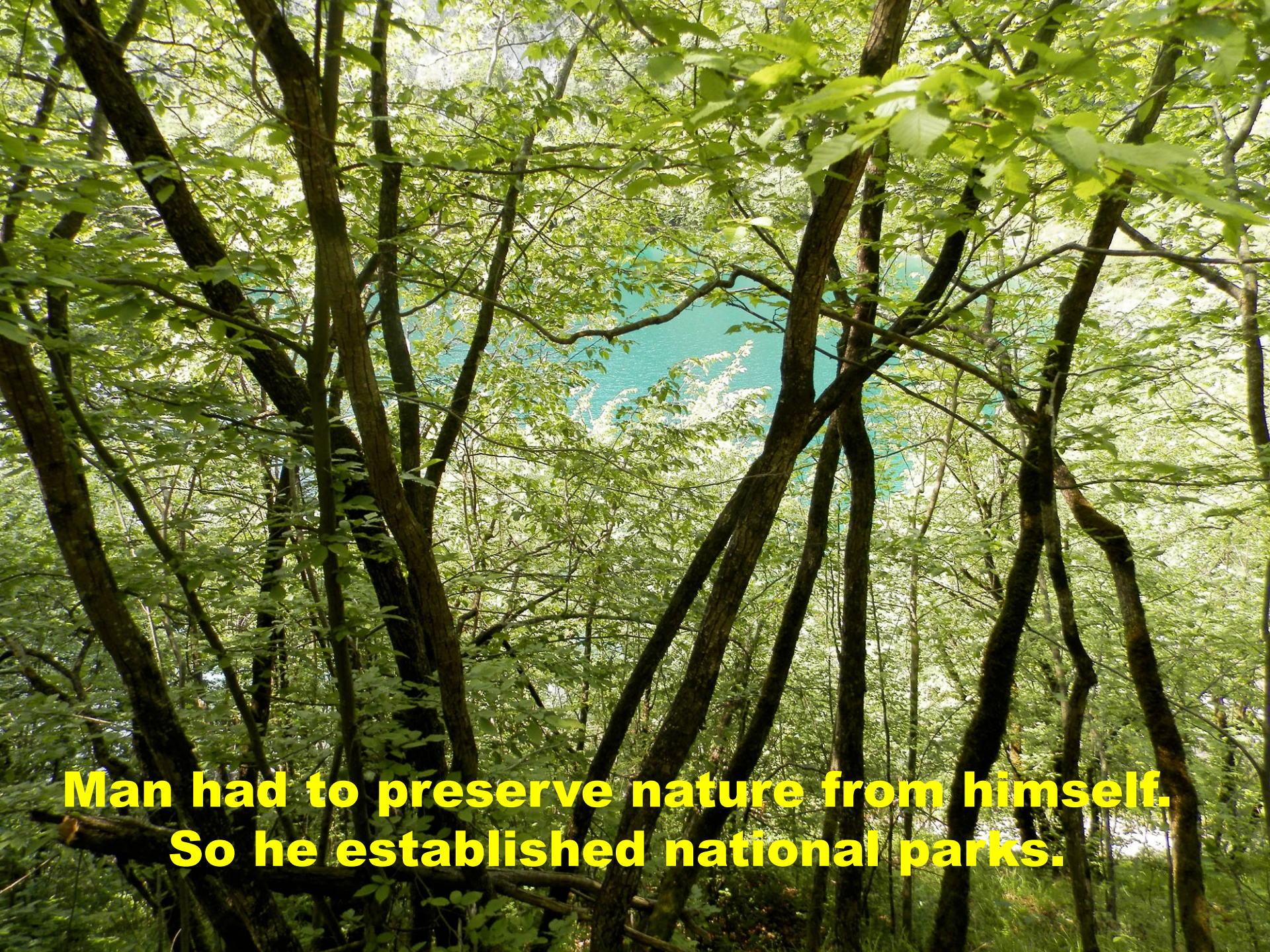
Everything has been
polluted: air, water and
soil.

World we live in

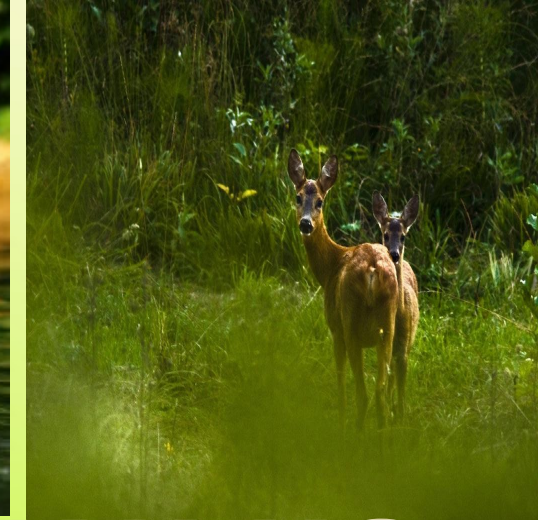


There are 50 to 150
different species of animals
and plants that die out every
day because their habitats
are being destroyed.

Three species a year die out



**Man had to preserve nature from himself.
So he established national parks.**



IMPORTANCE AND MEANING OF THE NATIONAL PARK

to preserve
special natural
resources



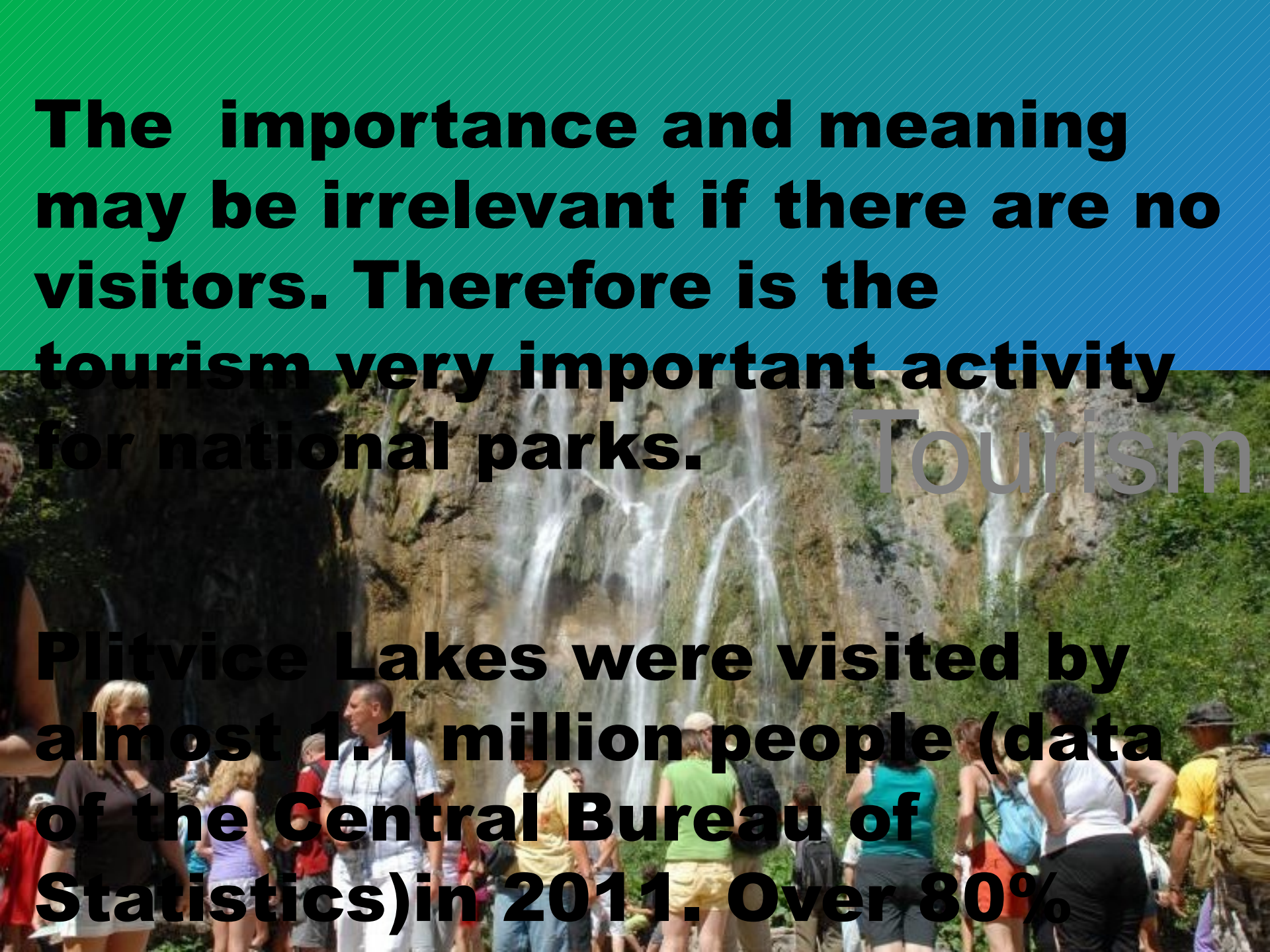
5/05/2007



to protect special cultural values which are of great national and international significance



The importance and meaning may be irrelevant if there are no visitors. Therefore is the tourism very important activity for national parks.



Tourism

Plitvice Lakes were visited by almost 1.1 million people (data of the Central Bureau of Statistics) in 2011. Over 80%

People in National Park research



learn





recreate

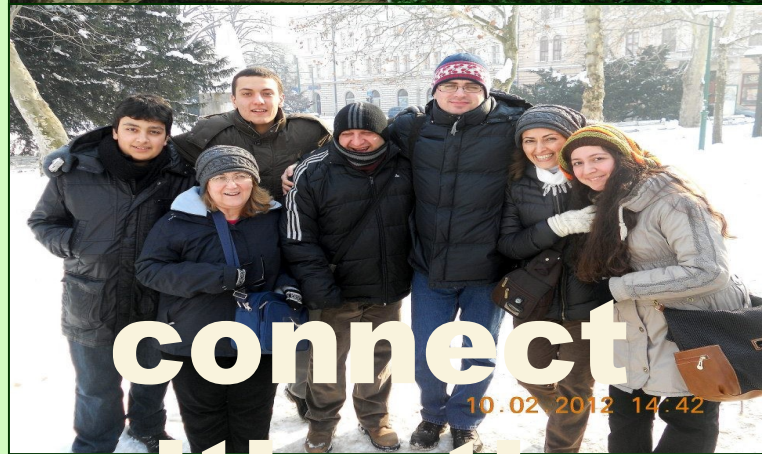




connect with nature



**connect
closely with
themselves**



**connect
with other
people**



A lush green forest scene with a stream flowing over mossy rocks. The water is dark and rippling, surrounded by dense foliage and moss-covered stones. The overall atmosphere is serene and natural.

**JUST LET NATURE
TAKE ITS COURSE!**

Niko Jeleč
Bruno Vukelić
Hrvoje Mesić
Đurđa Varzić-Pavković